

## HAIR BUN HOW-TO

**Make-up and Hair must be done before arriving to the Dress Rehearsal and Dance Concert.**  
See your Costume Info Sheet for specific Hair Style needed.



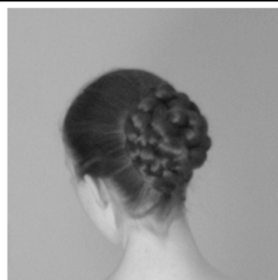
**STEP 1 - Put hair into a ponytail - LOW/MEDIUM/HIGH**, depending on where you need the bun to be in the end

- **LOW** - down at nape of the neck
- **MEDIUM** - back middle of the head, same height as nose
- **HIGH** - top corner of the head (not directly on top), visible from front

**HINT:** Do this when hair is wet or damp; using gel is helpful also.

**STEP 2 - Twist the ponytail and wrap it around the base of the ponytail as many times as needed.**

**HINT:** You can divide the hair into multiple sections – twist (and bobby pin) one section at a time. You can braid the hair (or even have multiple braids) before you twist and bobby pin.



**STEP 3 - Pin the bun into place using multiple Bobby Pins, Bun Pins &/or Roller Pins.**

**HINT:** Roller Pins (which are bigger than the normal Bobby Pins or Bun Pins) can be more effective in holding thicker hair in a bun. You can even use a combination of them – for a lot of hair, use the larger Roller Pins first and then use the smaller Bobby Pins and/or Bun Pins to secure smaller sections of hair.

Bobby Pin

Bun Pin

Roller Pin



**HINT:** Put a hairnet that matches the natural hair color around the bun to secure stray hair and to keep the bun contained and sleek. Wrap it around the bun as many times as necessary and use a few small Bobby Pins or Bun Pins to hold it in place. (The hair nets can be used multiple times!)

**STEP 4 - Add any needed hair decoration**

- Use clips to secure hair around the bun – on the side of the head and below the bun as needed to reduce fly-aways.
- Hairspray and/or gel all the hair to maintain the style over time. Hairspray again. ☺
- Add in the needed hair decoration - Read the Costume Info Sheet for placement

**Items used can be found at Wal-Mart, Sally Beauty Supply, etc.**

